
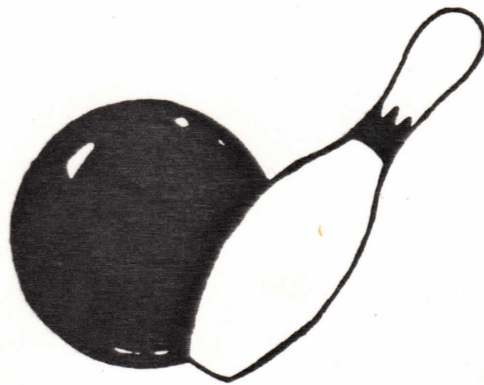


SET-UP INSTRUCTIONS
FOR
CHICAGO COIN'S

CADILLAC

BOWLER



MANUFACTURED BY
CHICAGO DYNAMIC INDUSTRIES, INC.
1725 WEST DIVERSEY BLVD - CHICAGO 14, ILLINOIS

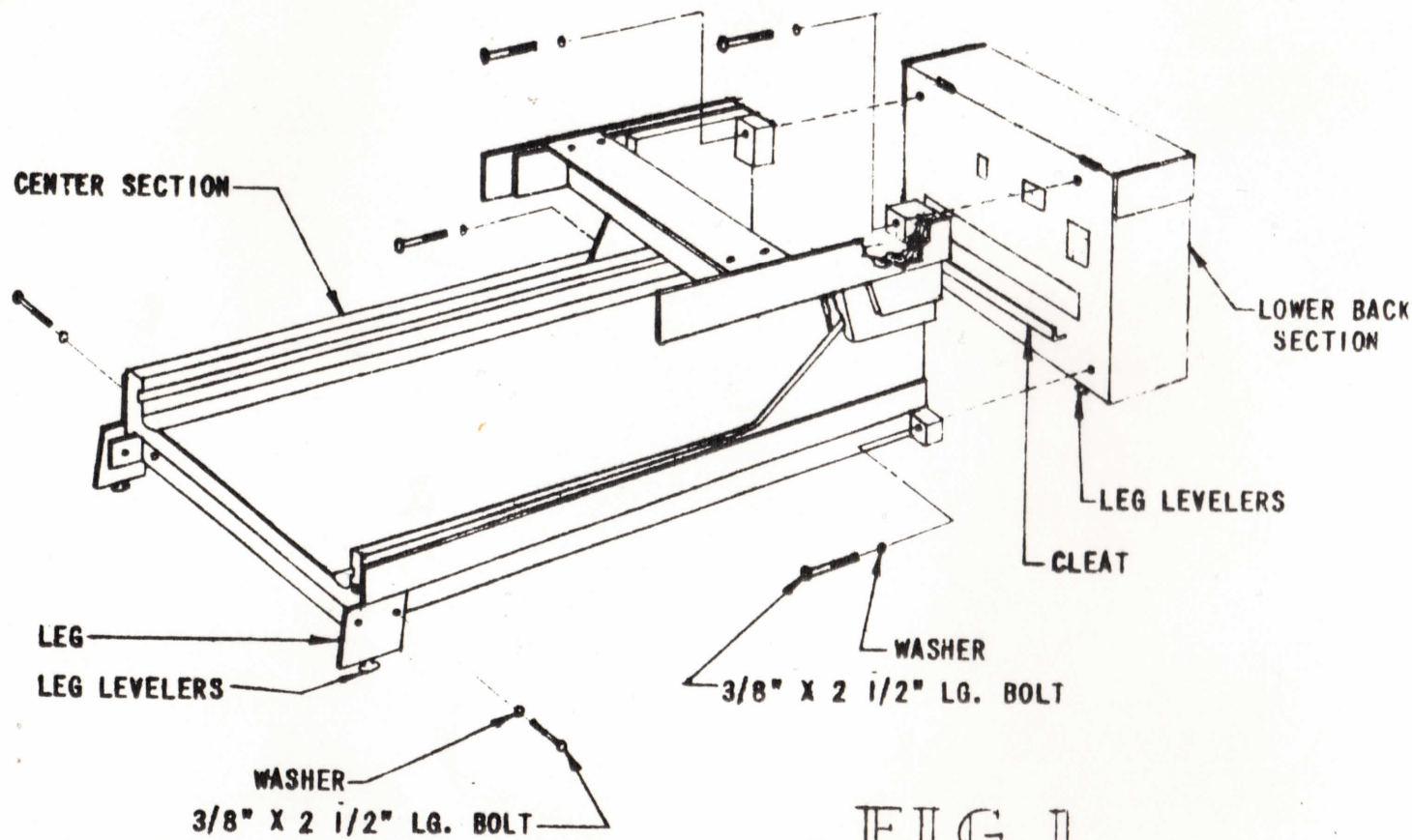


FIG. 1

- 1- Insert game levelers into two legs and attach to the center section of the game as shown. Do not tighten bolts firmly.
- 2- Insert four (4) game levelers into bottom of the lower back section.

- 1- Insert game levelers into the remaining two legs and attach to front section of the game as shown. Tighten bolts firmly.
- 2- Insert plug "J" in socket "S" and join together the front and center sections of the game. Insert the other two bolts into each long leg, but do not tighten. Now, insert the 7 1/2" long bolts through the holes in the cross member under the playfield as illustrated and tightened securely. These bolts hold playfield section together. Now tighten the bolts in the legs.

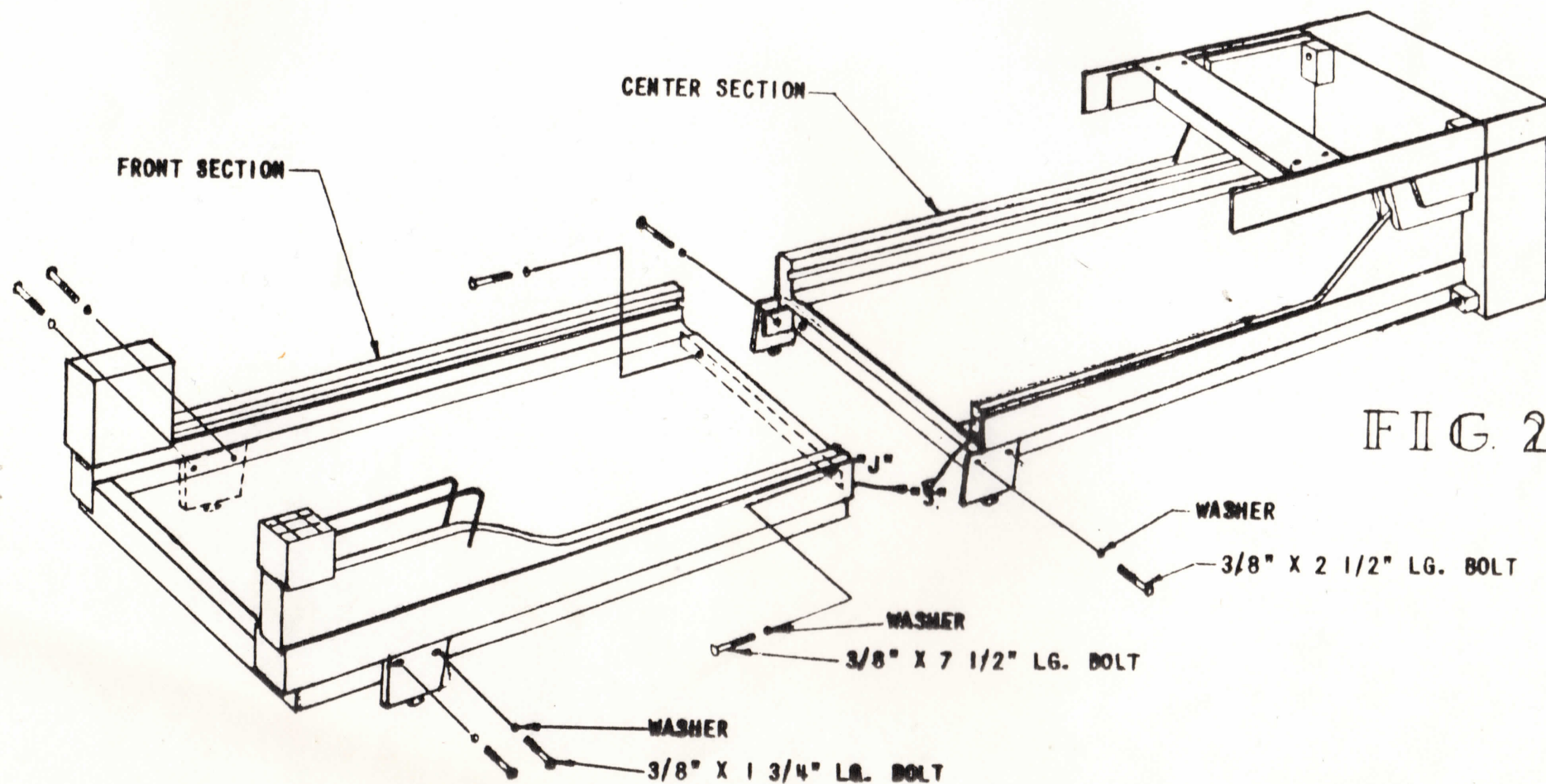


FIG. 2

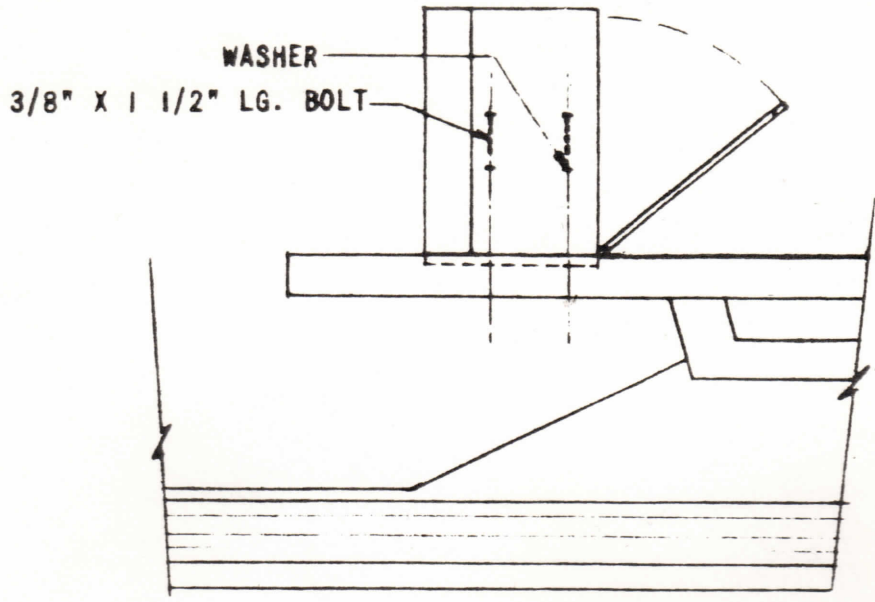
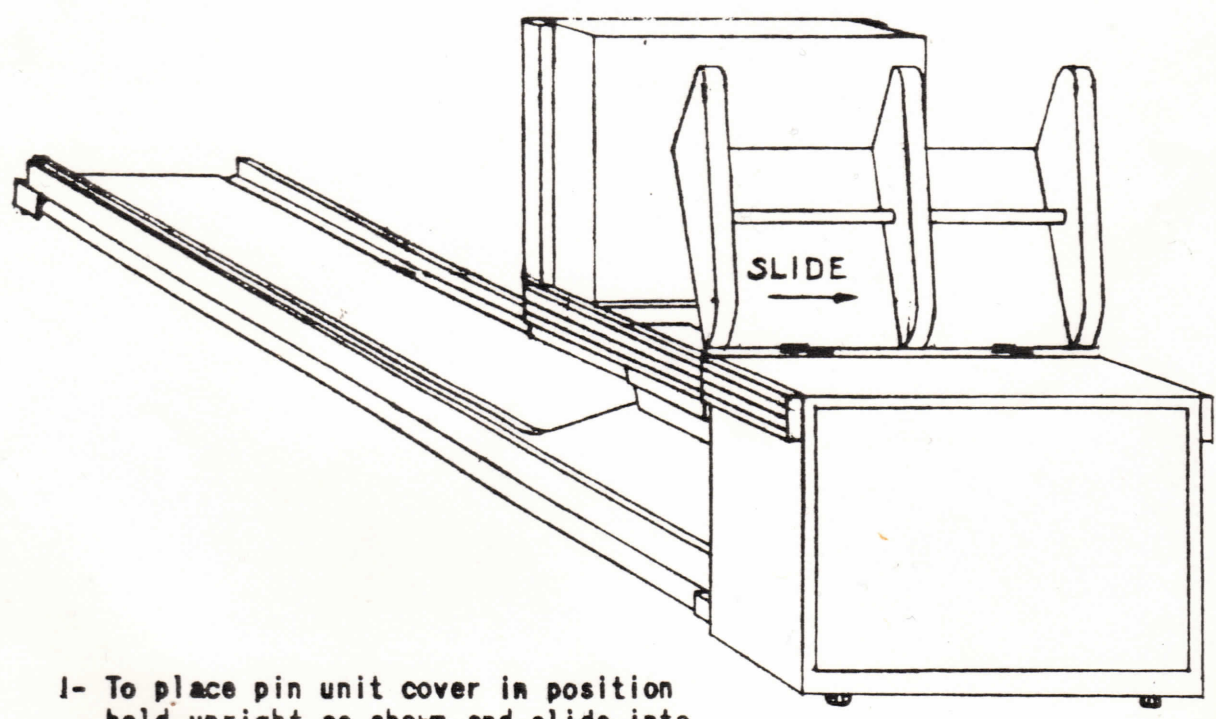


FIG. 3

- 1- Place score frame on top of mounting board (as shown)
- 2- Open back door slowly and hold score frame at top to prevent tipping.
- 3- Insert and secure 4 bolts.



- 1- To place pin unit cover in position hold upright as shown and slide into hinge bracket.

FIG. 4